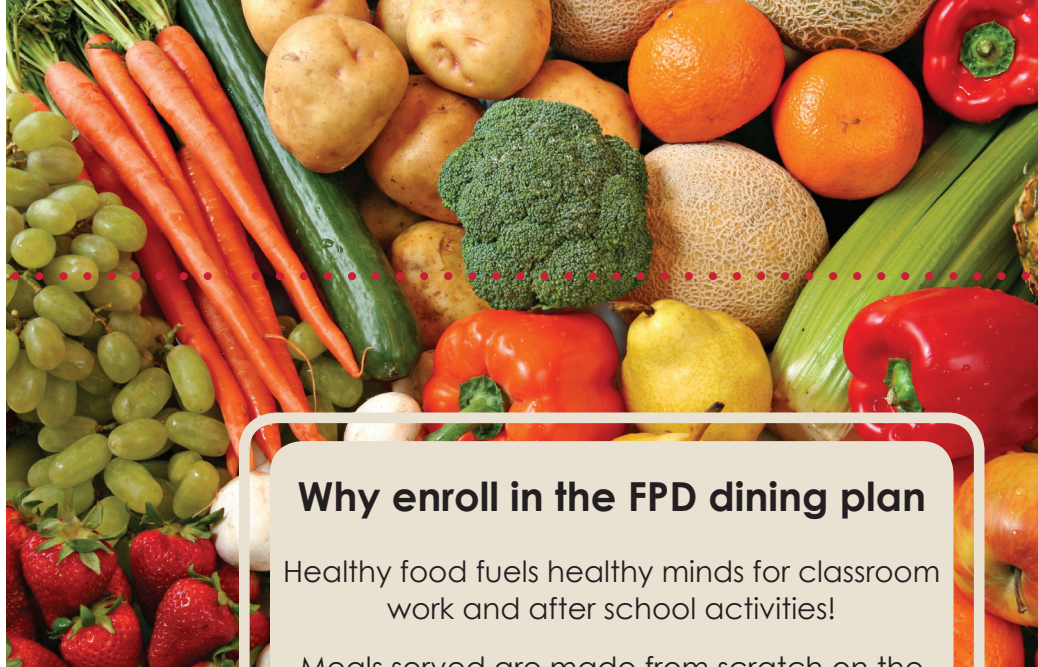


Dining

at FPD

3K - Kindergarten



Sage Dining Services provides a wonderful, healthy lunch for our students in 3K - 12th grade. The 3K, PreK, and Kindergarten optional meal plan is a five day plan that provides a wholesome, nutritious lunch to our youngest Vikings each day that lunch is served during the school year. Lunches include an age-appropriate entree, delicious sides, fruit, and hormone-free milk or 100% juice. The Sage staff delivers the lunches to your child's classroom in the Kindergarten building at approximately 12:40 p.m. each day.

Frequently Asked Questions

Are there any other options for 3K - Kindergarten students besides the five day plan?

For consistency purposes, the only plan offered is the five day plan.

How are fees assessed?

Dining fees are billed in equal installments from September - May and appear on the family billing statement.

If my child is a half-day student and is enrolled in afternoon day care, may he/she participate in the FPD lunch plan?

Yes, at the five day dining plan level.

May I change my plan?

Yes. Parents must give the Business Office a written notice 30 days in advance.

Cost: 3K - Kindergarten Dining Plan - \$62 per month (billed September - May)
See registration information on back.

Why enroll in the FPD dining plan

Healthy food fuels healthy minds for classroom work and after school activities!

Meals served are made from scratch on the day the food is served.

Organic options are served as often as possible including sustainable, locally sourced food. Some from FPD's own gardens!

Food served contains no MSG, partially hydrogenated oils, artificial trans fats, or LFTB.

Clean label food served. Clean label means the food is composed only easily recognizable ingredients, nothing artificial.

Gluten free, allergen free, and vegetarian options available every day.

Will I receive a credit if my child is absent from school and misses lunch?

If a Dining Plan enrolled student misses more than five consecutive days, some concession can be made on the monthly fee. Parents are encouraged to contact Kay Sexton in the Business Office if this situation occurs.

Is lunch provided on Early Dismissal days?

Students in grades 3K - K who are enrolled in the Dining Plan may participate in lunch on the days when grades 6-12 are released early and prior to mid-terms or finals.



NEW! Dining App - Touch of Sage. Menus, Allergen Info, Reviews, & More! For Android & Apple devices.

Dining Plan Enrollment 3K - Kindergarten

Enrollment Authorization

Please enroll my child(ren) in the FPD Sage Dining Plan selected below. I agree to the fee schedule and policies described in this brochure and commit to honor them for as long as my child(ren) is/are enrolled in the FPD Sage Dining Program. Pricing and policies are subject to change and are announced in July of each year.

Automatic Annual Re-enrollment

By signing below, I agree that my child's enrollment in the FPD Sage Dining plan will automatically renew each year as long as my child is enrolled at FPD or until I cancel the plan. I understand that I may cancel this agreement with a thirty day written notice to the FPD Business Office.



2018 - 2019 ENROLLMENT FORM

Only complete and return if you wish to make changes to the plan(s) you had last year or if you were not enrolled last year and wish to enroll. If you do not wish to make changes to your dining plan(s) selection, you will be automatically re-enrolled in the same plan(s).

Child _____

Grade _____

Child _____

Grade _____

Child _____

Grade _____

Child _____

Grade _____

Parent's Signature _____

Date Enrolled _____

If you wish to enroll or make changes, please complete and return this dining enrollment form to the FPD Business Office by Thursday, August 2, 2018.

Questions, Comments, Allergy Information:

Joe Bocchino, Sage Dining Service Director
Joe.bocchino@fpdmacon.org
478.477.6505, ext. 161

Enrollment Information:

Cindy Martin, FPD Business Office
cindy.martin@fpdmacon.org
478.477.6505, ext. 127

For more information visit www.fpdmacon.org/dining.